

# *Welcome to the New Beau Photo!*



Thanks to everyone who came out to our grand re-opening, and to everyone who has come by the new shop and cheered us on while we made this huge transition! It has been a challenge for us but it has also been a positive change. We look forward to having everyone by to talk photography and check it out.

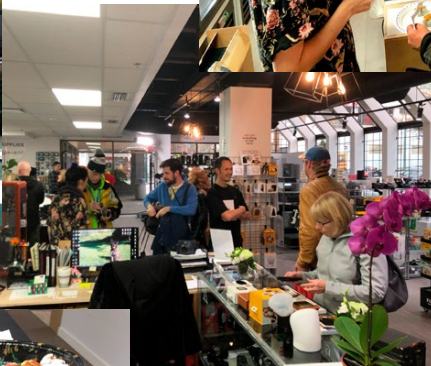


## Beau Newsletter - December 2018

Party Photos! • Self-serve printing now up and running • Keep your camera warm with a camera parka • Profoto A1 promotion • Smith Victor EZ Lantern • Mindshift bags now in • Used and demo Canon printers • Nikon Z6 in rentals • Waterproof film cameras • more...



# Scenes from our grand re-opening party...



## Door prize winners...

\$250 Nikon Gift Certificate - Sam Woodbridge  
\$250 Beau Rental Voucher - Rob Shaer  
\$150 Beau Rental Voucher - Chris Pollak  
\$100 Beau Gift Certificate - August  
Mindshift Camera Bag - Robyn Cowan  
Vanguard VEO 42 Bag - Leanne Scherp  
Tether Tools Rapid Mount SLX - Tom Alexander  
Domke Shoulder Bag - Kellan Higgins  
iSteadyPro Power Gimbal - Tyler Wilson  
Sirui Table Top Tripod - David Avelino  
Billingham Tablet Slip - Bruce Mills

Congratulations to all the winners and a big thank you to everyone who came by to see us! Hope to see you all again soon!

## DIGITAL

MIKE M.

### Self-Serve Printing and Scanning Workstation at Beau Photo!



The scanning and printing station at our new store is now set up and running. We have an iMac computer with the latest Photoshop CC and Lightroom Classic CC installed, a Canon imagePROGRAF PRO-2000 24" wide roll-feed printer and an imagePROGRAF PRO-1000 17" wide sheet-fed printer. While you can print sheets with the PRO-2000, loading single sheets can be very finicky and tedious, so we would only allow that in special circumstances. For scanning, we have an Epson V850 PRO currently, but next year, when Plustek releases their updated medium format scanner, we will be adding a dedicated film scanner as well. As far as pricing, this is what we've come up with, taxes extra...

Apple iMac for scanning, Photoshop or Lightroom use with no printing: \$30 / hour, billable in 15-minute increments

PRO-1000 usage (you supply your own sheet paper): \$8.50 / sq-foot

PRO-1000 with Sheet Media (standard matte, gloss or semi-gloss paper): \$9.00 / sq-foot

PRO-1000 with Sheet Media (premium fine art or Baryta papers): \$10.75 / sq-foot

PRO-2000 usage (you supply your own roll paper): \$6.75 / sq-foot

PRO-2000 with 24" Roll Media (standard matte, gloss or semi-gloss paper): \$7.25 / sq-foot

PRO-2000 with 24" Roll Media (premium fine art or Baryta papers): \$9.00 / sq-foot

If you do more than \$20 worth of printing per session, there is no charge for computer usage. For less than \$20 worth of printing, as long as you do some printing, the computer charge will be \$10 / hour, also billable in 15 minute increments.

You can easily calculate your printing costs by multiplying your print's image area length x width, dividing that number by 144 (which is 12"x12" or one square foot) and multiplying by the appropriate cost per square foot charges. Note that the charges which include paper assume that you generally use the smallest size paper that can handle the actual printed image size. For example, you would need use 8.5x11 paper for an 8x10 image area and not 13x19 paper. If you wanted to make a print with a small image area on a much larger size of paper that we supply, there may be an oversize paper charge. Following are some calculation examples for print costs with image areas as stated. The 8x10 prints are presuming 8.5x11 paper, the 12x18 print on 13x19 paper, the 16x20 print on 17x22 paper and the PRO-2000 prints are all on 24" wide roll paper...

Standard 8x10 on PRO-1000:  $8 \times 10 = 80 / 144 = 0.56$  sq-ft x \$9.00 = \$5.04

12x18 on PRO-1000 (your paper):  $12 \times 18 = 216 / 144 = 1.5$  sq-ft x \$8.50 = \$12.75

Premium 12x18 on PRO-1000:  $12 \times 18 = 216 / 144 = 1.5$  sq-ft x \$10.75 = \$16.13

Premium 16x20 on PRO-1000:  $16 \times 20 = 320 / 144 = 2.22$  sq-ft x \$10.75 = \$23.89

Standard 20x30 on PRO-2000:  $20 \times 30 = 600 / 144 = 4.17$  sq-ft x \$7.25 = \$30.21

Standard 24x36 on PRO-2000:  $24 \times 36 = 864 / 144 = 6.00$  sq-ft x \$7.25 = \$43.50



Premium 22x60 on PRO-2000:  $22 \times 60 = 1320 / 144 = 9.17 \text{ sq-ft} \times \$9.00 = \$82.50$

When you look at this, then clearly coming in to print a single 8x10 is not going to be all that economical since you'd be charged a minimum of \$4.76 if you bring your own paper, and then a \$2.50 charge for 15 minutes of computer usage, so \$7.26 plus taxes. So, if you need something in a hurry, or have your own specific premium paper (something like a metallic fine art for example), then it might make sense for a small run, but otherwise I would say only larger prints or a greater printing volume makes sense. Many of our customers already have their own printers for doing 8.5x11 or 13x19 printing, and we can help you if you'd like to purchase your own printer as well!

As far as using the scanning and printing station, we can provide a training session on how to load paper, properly use ICC profiles, operate the scanner software etc., and that will be charged at \$80/hr. If you need significant tech support during printing, we may charge you for that, although if you just have a quick question that needs answering, or there is a printing or scanning glitch that is not your fault, we will not charge extra in those cases.

We recommend that you make an appointment to use the station at a specific time, to ensure it is not in use by someone else when you get here. Also, if we are in the process of preparing for a trade show and require the station ourselves, or if we were to run out of a specific kind of paper, then you might also be disappointed if you come in without an appointment. Always call to make sure we have the paper you need for example and then book a time for the station.

As far as what papers we will be offering, we will have a selection of sheet media available in 8.5x11, 13x19 and 17x22, as well as 24" wide roll media. Our initial plan for paper types is as follows...

Standard Papers:

Hahnemühle Studio Book & Décor (matte - 240 gsm)

Ilford Smooth Gloss (310 gsm)

Ilford Smooth Pearl (310 gsm)

Premium Papers:

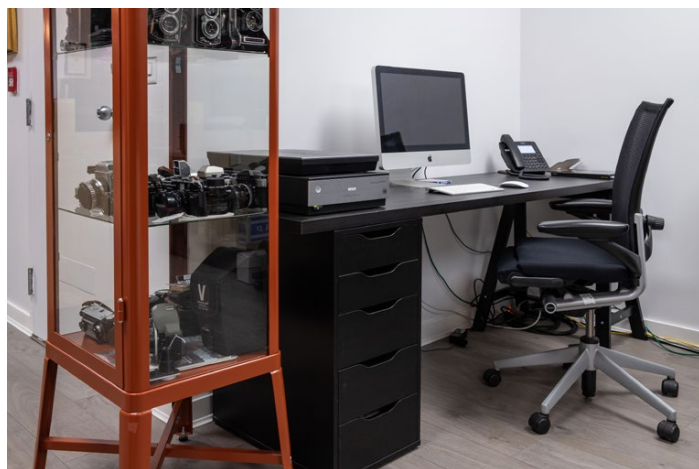
Harman FB Gloss AI (320 gsm - 8.5x11 only)

Harman Matte FB Mp (matte 320 gsm - 8.5x11 only)

Hahnemühle Photo Rag Fine Art (matte - 308 gsm)

Hahnemühle Photo Silk Baryta (310 gsm)

Please feel free to call us for more details if needed, or to book in a time to use the station!



## PRO SALES

KEN S.

### Featured Product: At Frosted Lens Camera Covers



As the days and nights are getting colder, photographers are looking at ways to protect their cameras from the cold and the elements.



Beau Photo sells camera covers for the extreme cold that are designed and produced by a local company called At Frosted Lens. These camera "Parkas" are designed for outdoor photographers looking at protecting DSLR bodies and lenses from wind, humidity, frost or cold, and saving battery life. Specifically designed for use with a tripod, the camera



parka is ideal for landscape photography such as long exposures, time-lapse, night, and astro-photography. Whether the dew point is an issue, or in foggy or cold weather, the Camera Parka protects camera equipment and extends battery life (compared to an unprotected camera).

The main features of the camera parka are:

- Protection against humidity, moisture and frost
- Protection against wind chill
- Protection against cold
- Easy access to camera controls with long and wide side sleeves

- Quick access to camera LCD with a flap
- Magnets in the flap to secure it open or closed
- Easy manual focusing without removing the cover
- A pull string to secure the cover around the lens hood
- Pull strings on side sleeves to close tight when not in use
- Adjustable around tripod plate/head through opening and a Velcro strap
- A snap hook to tie the two side sleeves together
- Keep hands warm when changing settings
- Fits most DSLRs\*



Two types of camera parka are available, the Camera Parka Classic and Camera Parka Pro. Both covers are made of high quality outdoor fabrics from Polartec®. The outer shell is water repellent, durable and blocks wind at 99%. It provides complete protection from wind, moisture and frost. The inner layer is a double fleece providing insulation from cold to the camera and warmth to the hands of the photographer when changing settings. The Camera Parka Pro has an extra layer of thermal fabric around the camera body. It helps keep the cold out and the heat in, when using chemical heat warmers for instance. Both covers have a version for short lenses or fish eye lenses. Extra pull strings inside the covers are used to secure the front sleeve around short lenses.

At Frosted Lens Classic Parka \$129.99

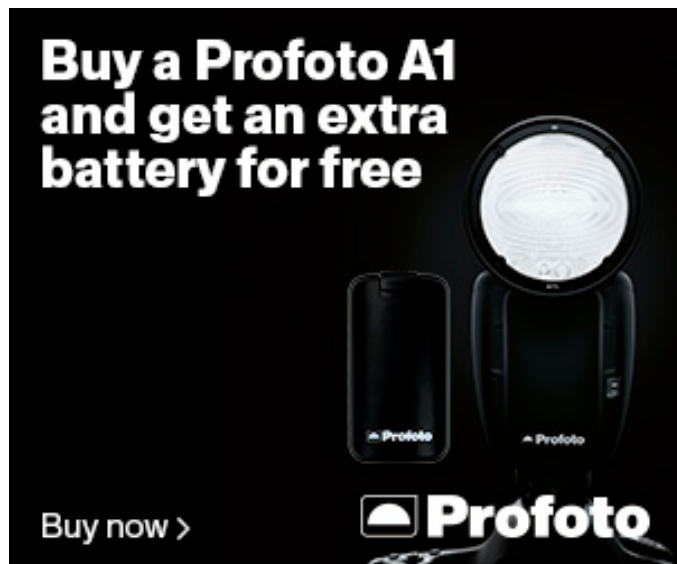
At Frosted Lens Classic Parka (Fisheye) \$139.99

At Frosted Lens Pro Parka \$149.99

At Frosted Lens Pro Parka (Fisheye) \$159.99

## The Profoto A1 Fall Promotion Continues

If you have been waiting to purchase a Profoto A1, now is the time with the Fall Promotion.



The Profoto A1 has been dubbed the world's smallest studio light. It is designed with very pleasing light shaping capabilities;. It has a unique round head with a soft, smooth fall-off that makes it easy to create a natural and beautiful light. It also includes a smart magnetic mount and three dedicated A1 Light Shaping Tools that click on and off quickly and easily – a Dome Diffuser, Wide Lens and Bounce Card. They can be stacked for more creative options. The A1 offers a built-in LED modeling light that makes it easy to set the light and understand how light and shadows work together, and it's extremely easy to use. Like all Profoto products, it's intuitive to use and you don't need to read a long instruction manual to understand how it works.

AirTTL remote is also built in to the A1. With AirTTL and HSS you create professional results fast and easy and with the remote you can seamless connect to other Profoto flashes and control them easily from the A1.

Profoto A1 is not only an on-camera flash, it's also very effective off-camera as a standalone unit. The A1 has its own Li-Ion high capacity battery built-in that lasts up to four times longer than AA batteries with no performance

fade, and a facility to recharge quickly, so you can shoot for longer with confidence. A1 can keep up with you because it recycles four times faster than other on-camera solutions – that's 1.2s at full power. Put simply, you'll never miss a shot.

Purchase a Profoto A1 between now and December 31st and get a free A1 battery. That is a \$142.00 Value

## New at Beau Photo - Smith Victor EZ Lantern



The Smith Victor EZ Lantern is an Omni directional light source that creates a soft even light. It can be used with either a strobe or continuous light. It often works best when used

overhead, but other applications include replicating mood lighting. When used from the side you can create a soft glow reminiscent of evening light. Use multiple EZ lanterns to create inviting architectural images. The resulting soft, even light has a wide light angle without defining the light source. The Smith Victor EZ Lantern is great for portraits, baby



photography, interviews, product and interior photography. The Smith Victor EZ Lantern comes with only a Bowers mount for the time being. **\$105.95**

## Noblex Super Wide PRO 6/150 U



Want an amazing and unique gift for Christmas. The Noblex Super Wide PRO 6/150 U is it. NOBLEX cameras are film cameras that expose the film by rotating the lens 360° for one exposure. The film rests on the curved film plane, and is exposed through the constant shutter slit. During the first half of the rotation the lens drum is accelerated to a constant speed insuring absolutely even exposure of the film during the second half of the rotation. This results in distortion free photographs with an angle of view of 146° when using a NOBLEX PRO 6/150. What makes these pictures stand out are their remarkably even edge to edge illumination and unsurpassed sharpness. This camera was recently serviced to make sure it is fully functional. This item is new in its original box but please note the rear battery doors are missing.

**Noblex PRO 6/150 U Regular \$4255.00 Clearance new lower price! \$1600.00**

## Manfrotto

Great deals on tripods for you or the photographer on your list.

**Manfrotto 055 Pro 3 section with MHXPRO-BHQ2 Ball head - Sale \$379.95 Reg. \$473.95**

**Manfrotto 055 Pro 3 section with MHXPRO-3W Pan 3 way head - Sale \$379.95 Reg. \$462.95**

**Manfrotto 055 Pro 4 section Carbon Fibre Tripod Sale \$496.95 Reg. \$631.95**

Limited quantities on the following:

**Manfrotto 190 Pro 3 section with MHXPRO-BHQ2 Ball head - Sale \$336.95 Reg. \$384.95**

**Manfrotto 190 Pro 3 section with MHXPRO-3W Pan 3 way head - Sale \$330.95 Reg. \$425.95**

## New in Used

### Canon Printers

#### Used Canon Pro I0 \$350.00

We have one used Canon Pixima Pro - I0 Printer. It is in great condition and priced to move. All the specs on this series of printers can be found at: [http://www.canon.ca/en/product?name=PIXMA\\_PRO-I0&category=/en/products/Printers/Desktop](http://www.canon.ca/en/product?name=PIXMA_PRO-I0&category=/en/products/Printers/Desktop)

#### Canon PIXMA PRO-100 (Demo) Sale Price \$150.00



If you are looking for a great deal on a great printer that prints up to 13" x 19" pro quality prints. This is great deal for you. More details can be found at: [http://www.canon.ca/en/product?name=PIXMA\\_PRO-100&category=/en/products/Printers/Desktop](http://www.canon.ca/en/product?name=PIXMA_PRO-100&category=/en/products/Printers/Desktop)

## RENTAL NEWS

JASON K.



We have just received our **Nikon Z6** mirrorless full frame camera! This new body from Nikon has a 24.5MP sensor with 5-axis in body image stabilization, 273 AF points and 12 fps shooting. Other features are a high resolution electronic viewfinder, up to 30 fps in 4K video mode, 60 fps in 1080p & 120fps in 720p. The rear of the camera has a tilting LCD screen and a familiar button/control placement for those used to the Nikon user interface. With the Nikon FTZ adapter, you can use any AF-S F-Mount Nikon lens with no loss in performance, and in some cases you will gain image stabilization!

\$160/day or weekend.

## Happy Holiday Rentals

This year, we will be closed on December 25 & 26, so if you would like to rent some gear for the Christmas holidays, you can pick up on Monday, December 24 and return on Thursday, December 27. Please note that as we are only open until 2pm on the 24th, all pick ups must be done before 2pm!

For New Year's, we will be open until 2pm on New Year's Eve and re-open on Wednesday, January 2.

## ACCESSORIES

MEGHAN S.

### Camera Bags & Straps

We have lots of metal camera cases on consignment currently. Some have their internal foam pieces and some are without. They are a great hard case for keeping your camera gear safe whether it's for travelling or just storage, and an inexpensive alternative to some of the other hard cases. There are also lots of other great used camera cases and bags! Not to mention the Toonie Bin! Lots of great little cases for small cameras, lenses, memory cards and any other small items...just \$2.00!! Think of it like a treasure hunt...

### MindShift Gear Accessory Cases



We now have some small cases from Mindshift in stock that are great for getting organized!

### Not just for GoPro!



We have the GP 2 Kit Case, which is a nice small case for any little extras you may have currently rattling around in your camera bag that perhaps need

a home of their own. Great for a GoPro, batteries, memory cards....you name it! \$59.00



We also have the GP Bundle (medium), which includes the GP 2 Kit Case (as mentioned above), GP Mounts-M case for any small accessories you need to keep separate, the GP 2 Batteries and Cards wallet for storing extra smaller batteries and memory cards, and the GP Cable and Power case for all your cords that inevitably need toting around, and like to get tangled! This set is perfect for your GoPro but also great for any photographer just looking to get a bit more organized. This set is definitely your best deal at \$139.00 for everything!

We are very excited to be stocking Mindshift Gear again, so be sure to come by and check out these unique bags with their rotational belt packs. Great for the photographer on the go, nature photographers, travel photographers or everyday use! The best camera is the one you have with you and Mindshift backpacks make having your favourite camera on you all the time easy and readily accessible!

### Burke Mountain Leather Straps

We have new stock of these beautiful handmade, locally made leather camera straps. They come in a variety of lengths and styles



as well as colors.

There's even a few wrist straps! We have a new style in too, in a very narrow strap. Great for those that like to also use it to wrap it around their hand as they shoot. These soft, natural straps are lovely and only get better with age! Makes a great gift for the photographer in your life too.

## FILM / ANALOGUE

NICOLE L-D.

A big thank you to everyone who showed up for our official store opening!

Just in time for Christmas I've got our consignment department fully stocked with 35mm cameras, both SLR's and Point & Shoots. Brands like Pentax, Canon, Samsung, Konica, Olympus, Nikon, Yashica and more. The perfect gift for you or someone else!

'Tis also the time of year for tropical getaways! And what better camera to holiday than with a waterproof camera! We have two classics for sale here at the moment, the Nikonos II and the Canon SureShot WP-I! Both take 35mm film and are pretty compact, perfect for travel.

The **Nikonos II** (selling for \$250) was released in 1968 and manufactured through to 1975. It was considered a pro camera with all manual settings, making it easier than ever to capture professional photos while on a dive. It can be submerged as deep as 50m (160 feet)! It is constructed from die-cast aluminum alloy and is sealed with O rings that do need to be regularly greased with a special lubricant.

The **Canon WP-I** (selling for \$100) is fully automatic point and shoot style camera. Made to be water proof to a depth of 16 feet, its more of a snorkeling/surfing surface of the water camera rather than a diving camera.



## RENAISSANCE ALBUMS PRESENTATION PRODUCTS

MEGHAN S.

## Presentation Products

As Barb mentioned in the previous newsletter before her retirement, I have taken over all presentation products from her, including AGT, TAP and Tyndell folders. It is a busy season of back to school photos, Christmas parties and various sporting events! If you have a big event coming up, please be sure to get your orders in well in advance so I can make sure we have enough stock for you. If you are an out of town AGT customer we can also easily have your order shipped directly from AGT to you! If you have any questions or would like to place an order please call or email me at [info@beauphoto.com](mailto:info@beauphoto.com)



SOULMATE PRODUCTIONS PRESENT

# WIDE HORIZON

A LANDSCAPE PHOTOGRAPHY MASTERCLASS

Guest Speaker **EDWIN MARTINEZ** / CANON AMBASSADOR **JANUARY 19 AND 20, 2019**  
Fee \$490 Early Bird \$420 til Dec 15, 2018 VANCOUVER, BC

To register: [soulmatesproduction@gmail.com](mailto:soulmatesproduction@gmail.com)



