



BEAU
PHOTO

RENTAL GUIDE 2011

Vancouver, BC - Canada, Eh!

We're not just about rentals...

The next time you're in Vancouver on a photo shoot, stop in at Beau and you'll find the equipment you need to get your job done. We've been in business since 1982 serving the professional photographic community in Vancouver as well as photographers from the rest of Canada, the United States and around the world. In addition to our rental department, we carry film (yes, film!), CD's, DVD's, gaffer tape, backdrop paper, professional albums, and just about anything else. Even though Beau Photo has been around since the 80's, it doesn't mean we're stuck there - well, maybe one or two of our staff are. Our digital department handles all the latest in digital devices - from SLR's and digital backs to scanners, storage devices, and Macintosh computers. Would you like some lighting with that? No problem... Hensel, Profoto, Dynalite and more! Also, check out our used gear either in-store or on the web. Come and meet the friendly (and sometimes quirky) staff - the coffee is always on in the morning and lively conversations are never far away!

1520 West 6th Ave
Vancouver, BC
Canada. V6J 1R2
ph.604.734.7771
rentals@beauphoto.com



www.beauphoto.com

*Cover Photo taken near a film set
in downtown Vancouver in April 2009*

Find What's Inside...

Lighting



Profoto
Dynalite
Speedotron
Hensel
Battery Power
Light Modifiers
Tungsten

Grip, Etc.



Stands
Booms
Tripods
Light Meters
Radio Slaves
Backdrops
FX

Cameras



Canon
Nikon
Digital Backs
Mamiya
Pentax
Large Format
Panoramic

Rental Terms & Conditions

Rates

All rates in this catalogue are daily rates. A day is considered 24 hours or part of; part days are billed at full day rates. Equipment can be picked up and returned Monday to Friday between 8:30 am and 5:00 pm.

Weekly rates are times 4 days. Monthly rates are times 12 days. **Weekend rates are billed at one day, pick up is after 1pm Friday and return is before noon on Monday.** Early Friday pick ups for the weekend will be charged at 1.5 day rate and can be picked up any time after 8:30am.

Any equipment returned late will be charged a late fee equal to a one day charge for every day or part of a day the equipment is late. It is your responsibility to know what time the equipment is due back.

Deposits

All rentals require a deposit equivalent to the replacement cost of the equipment unless an account has been established with Beau. Deposits must be left before the equipment is picked up and can be made by cash, certified cheque, Visa, M/C, American Express or Interac. **Credit cards will only be accepted if the credit card holder is present.**

Responsibility of the Renter

The equipment is not covered by Beau's insurance once it leaves the premises. The renter is responsible for loss or damage to the equipment due to negligence, theft, improper installation and/or operation of all rented equipment. The renter will be billed for all repairs or full replacement cost for new equipment. Beau Photo reserves the right to request proof of adequate insurance coverage for the equipment being rented. In the event of loss or damage to the equipment, additional charges for lost rental revenue may be applied. Batteries (other than rechargeable which are supplied) are the responsibility of the renter. It is suggested that the renter ensure they have a spare set of batteries on hand. The Renter acknowledges that they have used their own judgment to determine the suitability of the rented equipment for the Renter's purposes and that they shall be solely responsible for the proper installation and/or operation of the rented equipment.

Please read the full terms and conditions on the back of the rental contract or on our web page before taking out equipment.

Prices subject to change without notice.

All rates are in Canadian Funds.

Studio Lighting

Profoto

Pro 7 AS 2400ws pack	75.
Pro 7 head w/reflector	22.
Pro 7b 1200ws battery pack, 2 batteries	80.
Pro 7b head	18.
Extra Pro 7b battery	15.
Pro 6 2400ws freeze pack	65.
Bi-tube head w/reflector	28.
Head extension cable	6.
Profoto Strip Light Sm. w/barndoors	65.
Fresnel Spot w/barndoors	65.
Stick Light	20.
Ring Flash	30.
Profoto Giant reflector	110.
Softlight reflector (silver)	15.
Softlight reflector (beauty dish, white)	15.
Grid for softlight reflector	12.
Narrow Beam or Magnum reflector	10.
Grid for Magnum	10.
7" grid kit w/holder	10.



Pro globe	10.
Snoot	8.
Barndoors	10.

Profoto Kits

Pro 7b kit - includes: Pro 7b 1200ws pack, 2 heads, 2 stands, 2 batteries, 2 umbrellas, head extension	140.
---	------

Pro Acute 2R 1200 kit- 1200ws pack w/built in Pocket Wizard receiver, 3 heads, 3 stands, 2 head extension cords	100.
--	------

Profoto Monohead kits

500 Pro Air includes: 2 - 500ws heads, 2 stands, 2 umbrellas, remote	75.
---	-----

1000 Pro Air includes: 2 - 500ws heads, 2 stands, 2 umbrellas, remote	100.
--	------

600 Compact- includes: 2 - 600ws heads, 2 stands, 2 umbrellas	80.
--	-----

300 Compact- includes: 2 - 300ws heads, 2 stands, 2 umbrellas	60.
--	-----

Speedotron

4803CX power pack	65.
-------------------	-----

2405CX power pack	50.
-------------------	-----

1205CX power pack	40.
-------------------	-----

202VF flash head	18.
------------------	-----

4800ws head	28.
-------------	-----

4800ws zoom spot	28.
------------------	-----

Head extension cable	6.
----------------------	----

Dynalite

M2000wi with built in receiver	50.
--------------------------------	-----

M1000wi with built in receiver	40.
--------------------------------	-----

2000XL pack	40.
-------------	-----

1000X pack	30.
------------	-----

XP1100 battery supply w/3 batteries	55.
-------------------------------------	-----

Uni 400 kit - head w/2 Jackrabbit batteries	60.
---	-----

2040 or 4040 head	18.
-------------------	-----

Bi-tube head	28.
--------------	-----

Ringflash	30.
-----------	-----

Grid kit and holder	10.
---------------------	-----

Head extension cable	6.
----------------------	----

Barndoors	6.
-----------	----

18" softwhite reflector	12.
-------------------------	-----

Grid for softwhite reflector	12.
------------------------------	-----

Norman

P2000D pack	40.
-------------	-----

LH2400 flash head	18.
-------------------	-----

Trilite projection spot	28.
-------------------------	-----



Making every frame count!

 **Profoto**

Distributed in Canada by:
Blazes Photographic Inc. blazes@blazesphoto.com

I have been using Beau photo since the beginning of my career for all my gear and have never looked back. The staff is friendly (they make you feel like part of the family) and up to date when I have questions, and the selection is great. The rental department is fully equipped!! What more could a photographer want!!!
Erich Saide
www.erichsaide.com



Image by Hans Sipma Photography



I've always enjoyed being a customer at Beau Photo, but since I made the move to exclusively digital some years ago, they've become like a second family. Unlike my other family though, the Beau Photo team is always there for answers to camera questions, to solve technical problems, tell bad jokes and host the occasional barbeque. And they've never once asked me to clean up the kitchen.

www.hanssipma.com

Monohead Kits



Profoto

600 Compact- includes: 2 - 600ws heads, 2 stands, 2 umbrellas	80.
300 Compact- includes: 2 - 300ws heads, 2 stands, 2 umbrellas	60.
500 Pro Air includes: 2 - 500ws heads, 2 stands, 2 umbrellas, remote	75.
1000 Pro Air includes: 2 - 500ws heads, 2 stands, 2 umbrellas, remote	100.

Hensel

2 monohead kit - 2 - 500ws heads, 2 stands, 2 umbrellas	70.
Single Hensel head w/reflector	28.

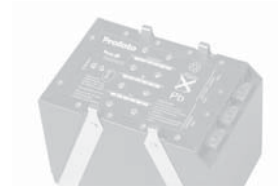
Broncolor

Minicom 80, 3 monohead kit - 3 - 600ws heads, 3 stands, 3 umbrellas	110.
--	------

Photogenic

2 monohead kit 150ws - 2 - 150ws heads, 2 stands 2 umbrellas	50.
2 monohead kit 300ws - 2 - 300ws heads, 2 stands 2 umbrellas	50.

Battery Pack Systems



Profoto

Profoto Pro 7b pack w/2 batteries	80.
Extra Pro 7b battery	15.
Pro 7b head	18.
Pro 7b kit - includes: Pro 7b 1200ws pack, 2 heads, 2 stands, 2 batteries, 2 umbrellas, head extension	140.

Hensel

Porty 12 Lithium - AS pack w/3 lightweight batteries	80.
Hensel Porty head	22.
Extra battery	15.
Hensel Ring Flash	28.
Hensel Fresnel Spot	28.
Head extension	6.
Beauty dish	12.
Snoot	8.
Barndoors	6.

Dynalite

Uni 400 kit - 400ws monohead, reflector, 2 Jackrabbit batteries, AC cord, sync. 60.

Dynalite XP1100 - portable AC power includes 3 batteries 55.

Visatec

Litepac battery pack 70.

600ws pack, 2 heads, 2 batteries, 2 stands

Quantum Turbo Battery

15.

Includes: Canon or Nikon cables, charger

Quantum Q-Flash kit

65.

Q Flash head, Turbo 2x2 pack, radio transmitter

Battery Information

	# of flashes at full power*	Time to charge to 100%
Dynalite XP1100	200/1000ws	2 hrs-80% 6hrs -100%
Profoto Pro7b	250	5.5 hrs
Hensel Porty 12 Lithium	230	50min. - 80%
Dynalite Uni 400	75 w/jackrabbit	not available
Quantum Turbo	700 w/SB800/580II	3 hrs

*without modeling light under ideal test conditions.

of flashes will vary depending on environment, conditions of use, age and condition of battery. Be sure to have a spare with you so you won't run out of power.

Tungsten Lights



Profoto

Pro Tungsten kit 75.

Includes: 3 - 500 watt heads, 3 stands

(will fit all Profoto accessories except globe)

Ianiro

Red Head kit 45.

Includes: 3 - 600 or 1000 watt heads

3 stands, 3 barndoors

Single Red Head 18.

600 or 1000 watt head w/barndoors

Softbox for hotlight (Profoto or Redhead) 18.

Umbrella (fits on Profoto only) 5.



Grip Equipment

Stands

Manfrotto 004 stand	5.
Manfrotto Backlight stand	5.
Manfrotto steel roller for booms	10.
C-stand w/grip arm	10.
Medium Hi roller stand	16.
Hi Hi roller stand	18.
Manfrotto Autopole	10.

Booms

Mini boom w/weight	10.
Super Boom w/weight	25.
Mega Boom w/sandbag	65.

Clamps and More

Matthelini clamp	7.
Super clamp w/pin	5.
J hook/A clamp	2.

Manfrotto Variable Friction Arm	10.
Apple Box - Full, 1/2, 1/4, 1/8	2.
Magliner Cart with shelf	35.
Sandbag	2.
Litetite	5.
Manfrotto Backdrop Support 16' - 4 Alucore, 2 stands w/pins	15.
Manfrotto Backdrop Support 10'	10.
6x6 silk or duvetyne only	25.
12x12 silk or duvetyne only	35.
6x6 frame	25.
12x12 frame	35.
18x24 open end scrim	5.
24x36 open end scrim	6.
Flag kit - 2 each, small (12"x18"), medium (16"x24"), large (24"x36")	25.
Single flag	5.
6x6 Butterfly kit (light duty) Includes: 6x6 silk, 6x6 griffolyn, light duty frame w/2 stands	45.
6x6 Butterfly kit (heavy duty) Includes: 6x6 snap-a-part frame, 2 med. high rollers, 6x6 silk, 6x6 duvetyne	65.

12x12 Butterfly kit (heavy duty) Includes: 12x12 snap-a-part frame, 2 med. high rollers, 12x12 silk, 12x12 black	75.
Mattboard reflector 4'x4' silver	25.
Soft Boxes/Umbrellas	
Chimera	
Extra Small - 16"x22"	12.
Small - 24"x32"	12.
Small Strip - 9"x36"	12.
Medium - 36"x48" (3'x4')	18.
Medium Strip - 14"x56" (1.1'x4.6')	18.
Large - 54"x72" (4.5'x6')	28.
Large Strip - 21"x84" (1.75'x7')	28.
Dedicated speedring	6.
Egg crate grids - Lg 50°, Med, Sm 40°	12.-28.
Chimera 5' Octabank	35.
Profoto Giant 6' - fits Profoto	110.
Elinchrome octabank 7' - fits Profoto	80.
Photoflex 7' octabank	38.
Illuminata 5' octabank	28.
Profoto or Photoflex umbrella	5.
Photoflex Litedisc reflector	5.

* rental of a softbox includes speedring

Slaves

Wein optical slave	5.
Pocket Wizard Plus/Plus II radio slave pair	15.
Extra transmitter or receiver	10.
Pocket Wizard Multimax, 1 transceiver	15.
Pocket Wizard Multimax, 2 transceivers	25.
Pocket Wizard Flex TT5 pair	25.
Pocket Wizard remote cord, Canon/Nikon	10.

Pocket Wizards are a good way to reliably trigger your studio lights without having to be tethered or tripping on sync cords. They are also recommended for protecting sensitive digital equipment from the high voltage that can sometimes come from connecting directly to studio strobes or an on camera flash.

Pocket Wizard Mini TT1, Flex TT5

Use with Canon flash with full TTL capability.

52 channel, 800' range

Pocket Wizard MultiMax

32 channel
1800' line of sight range
Transceiver

speed cycling, rear curtain sync, intervalometer.

Pocket Wizard Plus

4 channel
800' line of sight range
Transmitter or receiver

Pocket Wizard Plus II

4 channel
1600' line of sight range
Tranceiver

It has been my pleasure to deal with Beau Photo for my equipment rentals and supplies over the last 20 years. In a business as changeable as entertainment photography they have been both adaptable and reliable. Working with everyone at Beau over the years has not only reduced the stress load from my end of photo production, but has been a true delight.

Thank you Beau Photo.

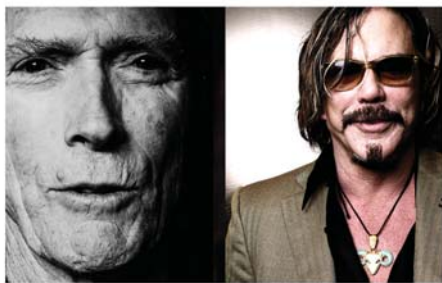


Image by Kharen Hill

Kharen Hill
Photographer
www.kharenhill.com



Image by Bob Akester

Without change, Beau Photo has adapted to the future.

Bob Akester
A&S Images

As a professional photographer in Vancouver, I find Beau Photo has everything I need and more. For professional gear and rentals they are always the first place I go to. Their staff is helpful, courteous and will always go out of their way to help me with my needs.

Jeff Vinnick
Vancouver Photographer
www.jeffvinnick.com



Image by Jeff Vinnick

if you want the best, ask for it by name



CARBON FIBRE TRIPODS
gitzo.ca



Manfrotto
Imagine More

TRIPODS AND LIGHT STANDS
manfrotto.ca



WEATHERPROOF HMI LIGHTING
bron-kobold.ca



STUDIO STROBE LIGHTING
bron.ca



GRIP EQUIPMENT



SOFTBOXES AND LITEDISCS
photoflex.ca

Light Meters

Minolta Autometer IV	18.
Minolta Flashmeter V / Sekonic L358	18.
Minolta 5 degree spot attachment	5.
Minolta Colormeter IIIF	25.
Minolta Spotmeter F	18.

Muslin Backdrops

16'x20'	40.
10'x20'	25.
10'x10'	15.
Dropit Modern backdrop 9'x12'	25.

Backgrounds are available in assorted colors.
Please call us or look on our website for details.

Manfrotto 10' backdrop support kit	10.
Manfrotto 16' backdrop support kit	15.

The muslin backdrops are painted or dyed and have a textured look to them, if you want solid colours, a seamless paper backdrop may be what you need. We sell seamless in 4' or 9'x36' rolls in a variety of colours or 12'x100' rolls in black, white or storm grey.



Tripods, Fans, Fog machine...

Manfrotto monopod	10.
Manfrotto tripod - 190 or 055	15.
Manfrotto, Slik, Gitzo large tripod	25.
Manfrotto 303 SPH VR panoramic head	35.
Le Maitre Show Fogger w/fog fluid	40.
<small>*additional fog fluid - \$24.50</small>	
Reel FX fan	60.
Clothing steamer	35.

Projectors

Kodak Ektagraphic III slide projector	20.
extra carousel	5.
Projection screen w/floor stand, approx 5' wide	10.
Light table - 12"x18" or 18"x24"	10.
Canon LV7260 digital video projector	75.



Cameras

Nikon

D3X body - 24.5 Mp, FX Includes: 2 batteries, 2 CF cards	350.
D3 body - 12.1 Mp, FX Includes: 2 batteries, 2 CF cards	250.
D3s body - 12.2 Mp, FX Includes: 2 batteries, 2 CF cards	250.
D700 body - 12.1 Mp, FX Includes: 2 batteries, 2 CF cards	200.
D7000 body - 16 Mp, DX Includes: 2 batteries, 2 SD cards	125.
D300s body - 12.3 Mp, DX Includes: 2 batteries, 2 CF cards	150.
D 90 kit - 12.3 Mp, DX Includes: 18-105 AF-S DX lens, 2 batteries, 2 SD cards	125.
F5 body	35.
F100 body	25.
F4 body	35.
Polaroid back for F4	20.
F3 body w/MD4 motor drive	25.

Nikon

AF 14mm f2.8D	35.
AF 16mm f2.8 fisheye	20.
AF 20mm f2.8D	20.
AF 24mm f2.8D	15.
AF-S 24 f1.4G	40.
AF 28mm f2.8D	15.
AF 35mm f2D	25.
AF-S 35mm f1.4 G	35.
AF 50mm f1.4	10.
AF-S 50mm f1.4G	20.
AF 60mm f2.8 macro	20.
AF-S 60mm f2.8G ED	25.
AF 85mm f1.4D	35.
AF 85mm f1.8D	20.
AF-S 85mm 1.4G	35.
AF-S Micro 105mm f2.8G VR	35.
AF 180mm f2.8	20.
AF-S 300mm f4	30.
AF-S 300mm f2.8G ED VR	75.
AF-S 400mm f2.8G IF-ED VR II	160.
AF-S 500mm f4	140.

Nikon

TC-14E teleconverter	20.
TC-17E teleconverter	20.
PC-E 24mm f3.5D ED	40.
PC 28mm f3.5 shift	25.
PC 85mm f.28 D micro tilt/shift	35.
AF-S 14-24 f2.8 G ED	35.
AF-S VR 16-35 f4 G	35.
AF-S DX 17-55 f2.8G	35.
AF-S 17-35 f2.8D	35.
AF-S 24-70 f2.8 G ED	35.
AF-S 28-70 f2.8D	35.
AF-S DX 18-200 f3.5-5.6	25.
AF 80-200mm f2.8	25.
AF-S 80-200mm f2.8	35.
AF-S VR II 70-200mm f2.8G	40.
SB 800 speedlight	20.
SB 900 speedlight	25.
Macro Bellows for F3 or similar body	10.
Cable release/remote MC-20	10.
SC-17/ SC-28/ SC-29 off camera cord	5.
Flash bracket	5.

From the inside out, Nikon
cameras and lenses create
incredible images.

D3x



Whether you are shooting with the full frame
24.5MP D3x or 12.1MP D3s and D700, or the high
performance DX format D7000 or D300s, you know
the Nikon quality will be there in your hands.
All you have to do is focus on your vision.



Beau Photo is a
Nikon PRO Dealer.
We're here to help
you get your job done.

Nikon
PRODEALER

Canon

Innovative
technology,
creative
possibilities.



EOS 60D



Mark III

EOS 5D Mark II

Canon

AS-15 PC sync adapter	5.
Lensbaby 2.0 selective focus lens	10.
Lensbaby Composer	15.

Canon

EOS 1Ds Mark III body - 21.1 MP, full frame Includes: 2 batteries, 2 CF cards	350.
EOS 1D Mark IV body - 16 MP, 1.3x crop Includes: 2 batteries, 2 CF cards	250.
EOS 5D Mark II body - 21.1 MP, full frame Includes: 4 batteries, 2 CF cards	200.
EOS 7D body - 18 MP, 1.6x crop Includes: 4 batteries, 2 CF cards	160.
EOS 60D body - 18 MP, 1.6x crop Includes: 4 batteries, 2 SD cards	125.
EOS 50D body w/grip - 15.1 MP, 1.6x crop Includes: 4 batteries, 2 CF cards	100.
Digital Rebel T2i kit - 18 MP, 1.6x crop w/17-40 f4 lens , 2 batteries, 2 SD cards	100.
EOS 1N film body	35.
EF 14mm f2.8L II USM	40.
EF 15mm f2.8 fisheye	25.
EF 20mm f2.8 USM	20.
EF 24mm f1.4 L II USM	35.
EF 35mm f2	25.

Canon

Canon

EF 35mm f1.4 L	35.
EF 50mm 1.2 L USM	35.
EF 50mm 1.4 USM	25.
EF 85mm f1.8 USM	25.
EF 85mm f1.2 L II USM	35.
EF 100mm f2 USM	25.
EF 135mm f2L USM	30.
EF 300mm f4L IS	35.
EF 300mm f2.8L IS	75.
EF 400mm f5.6L	35.
EF 500mm f4L IS USM	140.
EF 50mm f2.5 compact-macro	25.
EF-S 60mm f2.8 macro USM	25.
MP-E 65mm f2.8 1-5x Macro	35.
EF 100mm f2.8 macro USM	30.
EF 100mm f2.8 L macro IS	35.
TS-E 17mm f4 L	40.
TS-E 24mm f3.5L II	40.
TS-E 45mm f2.8	40.
EF-S 10-22mm f3.5-4.5 USM	25.

*EF-S lenses fit the Digital Rebel, 20D, 30D, 40D, 50D 60D 7D only

EF-S 15-85 F3.5-5.6 IS	25.
EF 16-35mm f2.8 L II USM	35.
EF 17-40 f4 L USM	25.
EF 24-70mm f2.8 L USM	35.
EF 24-105 f4 L IS USM	35.
EF 70-200mm f2.8 L USM	25.
EF 70-200mm f2.8 L IS II USM	40.
EF 100-400mm f4.5-5.6 L IS USM	35.
EF 70-300mm f4 - 5.6L IS USM	35.
1.4x II teleconverter	15.
2.0x III teleconverter	20.
Speedlight 580 EX II flash	20.
Off camera shoe cord 2	5.
Flash bracket	5.
Lensbaby 2.0 selective focus lens	10.
Lensbaby Composer	15.
Lensbaby 3G	20.
Z Finder 2.5X	20.
Follow Focus for Canon 7D or 5D Mk II	35.

Thinking of buying new gear? Rent it first and see what you think. If you decide to purchase that same model within 30 days, we will deduct up to two days of your rental charge from the price. Ask us for details. prosales@beauphoto.com

*Offer subject to change without notice

Hasselblad

H4D 50 Digital kit -	650.
H4D 50 digital back, body, 80mm lens Includes: 2 - 8GB CF cards, tether cord, Phocus software, 2 batteries, firewire card reader	
H2 body - 2 batteries	50.
Film magazine for H2 body	20.
HC 35mm f3.5	50.
HC 80mm f2.8	40.
HC 120mm macro f4	60.
HC 150mm 3.2	50.
CF lens adapter	30.
503 CX body	30.
503 CW with winder	40.
903 SWC	50.
30mm f3.5 fisheye	45.
40mm CFE f4	40.
50mm CF f4	30.
60mm CF f3.5	30.
80mm CF or CFE f2.8	25.
120mm CF or CFi f4 macro	30.



Are You
Ready for a
Hasselblad?

Photo: Marco Grob

More and more, most high-end 35mm photographers reach a point where they begin to feel the limitations of their digital camera systems. A point when sensors may begin to outperform the lenses that are feeding them and when more work is required in Photoshop than in shooting if they are to achieve acceptable results. A point when they – or their clients – begin to demand more quality than 35mm systems are capable of producing. The Hasselblad H System begins where 35mm systems leave off. So perhaps the time has come to ask yourself – are you ready for a Hasselblad?



Because all the work you've done
on your job ends up on a little card
that is less than two
inches square...



...that memory card better be good.
Trust Lexar Professional cards with your
most important work.

Beau Photo carries the full line of
Lexar Professional products, including
Compact Flash and SD cards,
and card readers.

Lexar™

150mm CF f4	30.
180mm CF f4	35.
250mm CF f5.6	45.
350mm CF f5.6	45.
Extension tube set - 8mm, 16mm, 32mm	25.
Single extension tube	10.
Film magazine A-12 or A-24	15.
Polaroid back	15.
Prism finder	12.
Pro shade	6.
X-Pan kit w/2 lenses - 45mm, 90mm	90.

Phase One

P65+ digital kit - 850.

P65+ - 60Mp digital back, Hasselblad H2 body, 80mm lens. Includes: 2 - 8GB CF cards, tether cord, Capture One software, 2 batteries, firewire card reader.

P45+ digital kit - 750.

P45+ - 39Mp digital back, Phase One (Mamiya) 645 AF body, 80mm lens. Includes: 2 - 8GB CF cards, tether cord, Capture One software, 2 batteries, firewire card reader.

28mm AF lens 60.

45mm AF lens 45.

Hasselblad/Phase

120mm MF macro lens	45.
150mm AF lens	60.
75-150mm AF zoom lens	60.
Mamiya RZ	
RZ Pro II body	30.
RB 37mm f4.5 fisheye	40.
RB 65mm f4	30.
RB 100-200mm f5.2 zoom	35.
RZ 50mm f4.5	30.
RZ 65mm f4	30.
RZ 75mm f4.5 shift	40.
RZ 90mm f3.5	25.
RZ 110mm f2.8	25.
RZ 140mm f4.5 macro	30.
RZ 150mm f3.5	30.
RZ 180mm f4.5	30.
RZ 250mm f4.5	30.
RZ film magazine, 120 or 220	12.
RZ polaroid back	15.
RZ 1.4x teleconverter	20.
RZ 82mm extension tube	10.
Prism finder	15.

RZ winder	10.
L-grip	10.
Lee lens shade and filter holder	15.

Mamiya 645

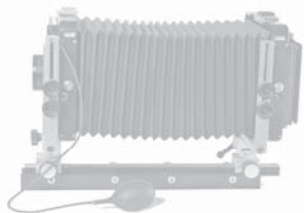
645 Pro body w/prism and drive	35.
35mm f3.5	30.
80mm f2.8 - or - 110mm f2.8 - or - 150mm f4	20.
105-210mm f4.5 zoom	40.
300mm f5.6	20.
120 film magazine	12.
Polaroid back	15.

Mamiya 7

Mamiya 7 body	30.
50mm f4.5 - or - 80mm f4 -or - 150mm f4.5	30.
35mm panorama insert	10.

Pentax

67 II body w/metered prism	30.
45mm f4 - or - 165mm f 4 leaf shutter	25.
105mm f2.4	15.
135mm macro f4	20.
165mm f 4 leaf shutter	25.



Large Format

Sinar F2 4x5 camera body	45.
Includes: dark cloth, 5 - 4x5 film holders, cable release	
Sinar F2 4x5 body w/lens	65.
Schneider Super Angulon XL 58mm f5.6	30.
Schneider Apo Symmar 75mm f5.6	28.
Schneider Super Angulon 90mm f5.6	28.
Schneider 120mm f5.6 macro	28.
Schneider Symmar-S 135mm f5.6	28.
Schneider Apo Symmar 150mm f5.6	28.
Schneider Apo Symmar 180mm f5.6	28.
Schneider Symmar-S 210mm f5.6	28.
Caltar II N 360mm f6.8	40.
*lenses are mounted on Sinar boards, there are Toyo boards in Copal 0 and 1, and Cambo boards in Copal 0, 1, and 3 available.	
4x5 film holder	2.
Wide angle bellows	10.
Polaroid back	15.

6x7 roll film holder	20.
6x12 roll film holder	20.

8x10 camera

Cambo 8x10 camera	75.
Includes 1 dark cloth, 5 film holders, cable release	
*the 360mm lens covers 8x10	
8x10 to 4x5 reducing back	15.
Large Manfrotto tripod	25.

In our film department we carry a wide selection of film, paper, and chemistry from Fuji, Kodak, Ilford, Bergger, Maco, Efke, Oriental... call us if there is something specific you are looking for.

film@beauphoto.com

35mm format		6x4.5/6x6 format		6x7 format		4x5 format		8x10 format	
Focal Length	Angle of View*	Focal Length	Angle of View*	Focal Length	Angle of View*	Focal Length	Angle of View*	Focal Length	Angle of View*
14mm	104°								
20mm	84°					65mm	86°		
24mm	74°	35mm	77°	45mm	75°	75mm	78°		
		40mm	70°	50mm	70°				
28mm	65°					90mm	68°		
35mm	54°	50mm	59°	65mm	56°	120mm	53°		
		60mm	50°	80mm	47°	135mm	48°		
50mm	40°	80mm	38°	90mm	42°	150mm	44°	360mm	39°
				110mm	35°	180mm	37°		
85mm	24°	110mm	28°	150mm	26°	210mm	31°		
		150mm	21°	180mm	22°				
105mm	19°	180mm	17°	250mm	16°	360mm	19°		
135mm	15°	210mm	15°						
180mm	12°	250mm	12°						
300mm	7°	350mm	9°						
500mm	4°								

* Approximate horizontal, angle in degrees



Panoramic

Linhof Technorama 617S 110° view	85.
Noblex 6x12 140° view	100.
X-PAN kit w/45mm, 90mm lens	90.



Polaroid

8x10 film processor	25.
600SE proofing camera w/lens - works with Fuji instant film	25.
600SE extra lens 75mm, 127mm, 150mm	10.
Spectra camera	12.
Daylab Jr. Slide printer	10.
Daylab with 3x4 base	15.
4x5 base includes 545 back	15.
SX-70 base/8x10 base	15.

Panoramic & Polaroid

Additional Digital Equipment - Scanners Etc.

Extra 8GB CF card	10.
Extra 32GB card	15.
Extra camera battery	5 - 15
RODE Stereo Video mic	15.
Z Finder 2.5x, for Canon body	20.
Follow Focus for Canon 7D or 5D MkII	35.
Lite Panel Micro Pro	20.

Canon Digital

Canon LV7260 digital projector 75.

Digital video projector, 2000 ANSI Lumens, 1.6x wide angle zoom, keystone and colour correction. Connects using VGA, S-video, RCA. Adapters for Mac laptops not supplied.

Canon Vixia HV-30 HD camcorder 45.

Digital video camcorder, Image stabilizer, cinema mode, 10x optical zoom. Includes: firewire cable, RCA cables, 2 batteries, remote

Nikon Scanners

Super Coolscan V-ED scanner 55.
35mm transparencies and negatives
USB 2.0 connection, 4000dpi optical resolution, density range 4.2.
Requires: Mac OS 9.1 or up, Win 98SE, ME, XP, 2000.

Super Coolscan 5000-ED scanner 65.
35mm transparencies and negatives
USB 2.0 connection, 4000dpi optical resolution, 4.8 density range.
Requires: Mac OS 9.1 or up, Win 98SE, ME, XP, 2000.

Coolscan 8000 ED scanner 75.
35mm, 645, 6x6, 6x7, 6x9 transparencies and negatives, firewire connection only, 4000dpi optical resolution, 4.8 density range.
Requires: Mac OS 9.1 or up, Win 98SE, ME, XP, 2000

Coolscan 9000 ED scanner 85.
35mm, 645, 6x6, 6x7, 6x9 transparencies and negatives, firewire connection only, 4000dpi optical resolution, 4.8 density range.
Requires: Mac OS 9.1 or up, Win 98SE, ME, XP, 2000

*See our website for scanning tips.
www.beauphoto.com/digital/coolscan

We also carry gaffer tape, Rosco gels, batteries, 4'x8' foam core, film, and many other expendables.

How big a print can I make from my digital camera?

Your camera has specific horizontal and vertical pixel dimensions, for example, 3008x2000, 3504x2336 pixels etc. If you divide one of these pixel dimensions by your desired printing size, you can then calculate what dpi an image your camera will give you. An example... your camera has 3000x2000 pixels, and you want to make a print that is 14 inches wide... so 3000 divided by 14 equals 214 (rounded off), or 214 dpi. So your 3000x2000 camera can give you a 14x9.3 inch print at 214 dpi.

So really... how BIG a print can I make? Don't I need at least 300 dpi for a good print? If you don't interpolate your image, then the larger you print, the lower the effective dpi will drop. I find that for high-quality smaller prints, around 180 dpi is about as low as I would want to go. For large inkjet posters, 120dpi is still perfectly fine and for gigantic billboards, usually a mere 20-40 dpi will suffice! If you are trying to push a relatively low-res digital file too big, you may start to see pixelization. You can upsample or resize an image (Photoshop bicubic-smoother, Genuine Fractals etc.) to increase the effective file size. The practical limit of how large you can go is very dependant on the quality of the original digital file. If the original was a technically sound capture (good lens, sharp focus, low ISO, good exposure etc.) then you might be surprised at how big you can go from a relatively small file. I have seen excellent 20x30's even from 6-8 Mp SLRs, 40x60's from 12-16Mp SLRs and with 16Mp or higher digital backs, the sky's the limit! Billboards (easy), bus shelters and more...

Mike Mander

digital@beauphoto.com

Memory Cards – Care and Feeding:

If nothing else, remember this sequence... **shoot, download, verify, format**... shoot, download, verify, format etc. **Shoot** your images, **download** to your computer or storage device, **verify** that your downloaded images are safe and readable, then finally **format** your memory card in-camera (not on your computer) prior to its next use. Do not open, rename or delete images directly from the memory card with your computer!

Work out a system of keeping formatted (blank) memory cards distinctly separate from cards that have been shot-to and not downloaded yet. Organize your workflow to ensure that all images are downloaded safely and that none are lost due to an accidental reformat!

If you suspect a card problem, immediately stop using that card! If there are images on the card, continued use of a card with a damaged directory structure could very well mean loss of subsequent images (at the very least) or possibly loss of all images on that card. Make sure you have card recovery software on hand such as Lexar Media's ImageRescue or PhotoRescue from **www.datarescue.com**. These programs will usually allow for a near full recovery of images from a directory-damaged memory card.

Insert cards gently into a camera's card slot. Even if you are in a hurry, please avoid slamming a card home! This can cause bent pins in the camera's card slot, potentially resulting in a total malfunction of the camera and a relatively costly repair.

For far more tips on digital camera use, see our website at: **<http://www.beauphoto.com/digicamtips/>** or email us at...

digital@beauphoto.com

Vancouver has some great assistants, have a look on our website on the rental page for an up to date list. You'll also find make-up artists, stylists, models, etc.

We also list studios available for rent in Vancouver, from small and inexpensive to a full studio setting with kitchen and makeup areas.

About Vancouver...

The Tourism Vancouver website with lots of information on events, accommodations, and other facts about our city.

www.tourismvancouver.com

B.C.Highways - www.drivebc.ca

City of Vancouver - www.vancouver.ca

A few measurement conversions...

Metric	Imperial	Imperial	Metric
1 cm	.39 inch	1 inch	2.54cm
1 meter	3.28 feet	1 foot	30.4cm
1 km	.62 mile	1 mile	1.6 km
1kg	2.2 lbs	1 lb	.453 kg

To convert Fahrenheit to Centigrade-
Subtract 30 and divide by 2

To convert Centigrade to Fahrenheit-
Multiply by 2 and add 30

This is not an exact conversion but accurate enough for weather and much easier to figure out in your head.

Digital Camera Reference Chart

	Megapixel (dimensions)	16bit File Size	Focal Length Multiplier	300dpi print (non interpolated)	Capture fps* (buffer)	ISO range	Sync Speed	Approx. images per 1GB card
Canon Rebel-T2i	18 Mp (5184 x 3456)	102.5 MB	1.6x	17.2" x 11.5"	3.7 fps (6 raw/34 jpeg)	100 - 6400	1/200	34 raw or 125 jpeg
Canon EOS-50D	15.1Mp (4752 x 3168)	86.1 MB	1.6x	15.8" x 10.6"	6.3 fps (16 raw/60 jpeg)	100 - 6400 100 - 12800**	1/250	45 raw or 183 jpeg
Canon EOS-60D	18 Mp (5184 x 3456)	102.5 MB	1.6x	17.2" x 11.5"	5.3 fps (16 raw/58 jpeg)	100 - 6400 100 - 12800**	1/250	34 raw or 125 jpeg
Canon EOS-7D	18 Mp (5184 x 3456)	102.5 MB	1.6x	17.2" x 11.5"	8 fps (15 raw/94 jpeg)	100 - 6400	1/250	34 raw or 125 jpeg
Canon EOS 5D Mk II	21.1 Mp (5616 x 3744)	120MB	1.0x	18.7" x 12.5"	3.9 fps (13 raw/78 jpeg)	100 - 6400 100 - 25600**	1/200	35 raw or 157 jpeg
Canon EOS-1D Mark IV	16 Mp (4896 x 3264)	91.4 MB	1.3x	16.3"x10.8"	10 fps (26 raw/85 jpeg)	100 - 12800	1/300	66 raw or 197 jpeg
Canon EOS-1Ds Mark III	21.1 Mp (5616 x 3744)	120 MB	1.0x	18.7" x 12.48"	5 fps (12 raw/56 jpeg)	50 - 3200	1/250	36 raw or 144 jpeg
Nikon D90	12.3 Mp (4288x2848)	69.9MB	1.5x	14.3" x 9.5"	4.5 fps (6 raw/23 jpeg)	200 - 3200+	1/200	67 raw or 138 jpeg
Nikon D300s	12.3 Mp (4288 x 2848)	69.9 MB	1.5x	14.3" x 9.5"	6-8 fps (t.b.a. raw/100 jpeg)	200 - 3200+	1/250	48 raw or 136 jpeg
Nikon D700	12.1 Mp (4256x2832)	68 MB	1.0x	14.2" x 9.4"	5 fps (17 raw /100 jpeg)	200 - 6400+	1/250	49 raw or 136 jpeg
Nikon D7000	16.2Mp (4928x3264)	92MB	1.5x	10.9" x 16.4"	6 fps (10 raw/44 jpeg)	100 - 6400 100 - 25600**	1/250	28 raw or 68 jpeg
Nikon D3	12.1 Mp (4256x2832)	68.0 MB	1.0x	14.2" x 9.4"	9 fps (18 raw/64 jpeg)	200 - 6400 100 - 25,600**	1/250	49 raw or 136 jpeg
Nikon D3s	12.1 Mp (4256 x 2832)	68 MB	1.0x	14.2" x 9.4"	9 fps (36 raw/82 jpeg)	200 - 12800	1/250	50 raw or 136 jpeg
Nikon D3x	24.5 Mp (6048x4032)	139 MB	1.0x	20.2" x 13.4"	5 fps 21 raw/44 jpeg	100 - 1600+	1/250	24 raw or 67 jpeg
								**extended ISO range
Hasselblad H3DII/50	50.0 Mp (8176x6132)	286.9 MB	1.10x (645)	27.3" x 20.44"	0.8 fps (25+ raw)*	50 - 400	1/800 sec	12 (3FR raw)
Phase One P45+	39 Mp (7216x5412)	223 MB	1.10x (645)	24.0" x 18.0"	0.7 fps	50 - 800	1/125	
Phase One P65+	60Mp (8984 x 6732)	346 MB	1.0x (645)	29" x 22"	1.0 fps	50 - 800	-	



BEAU PHOTO SUPPLIES
Vancouver, BC
www.beauphoto.com



